

# Things are looking up

Mepilex® Up: A new and innovative foam dressing designed to minimise risk of leakage<sup>1</sup>. Inspired by patient needs and clinician perspectives.



Mepilex® Up

  
Mölnlycke®

# In the battle against leakage, patients and clinicians need better options

Patients suffering from VLU and other exuding wounds can find their quality of life is significantly reduced. When dressings fail to manage exudate effectively, fluid can leak onto healthy skin and patients' clothes. This looks unsightly and may emit bad odours, causing great embarrassment. It's not unusual for patients to socially isolate themselves as a result, with significant impact on their quality of life<sup>3</sup>.

Most clinicians would agree — patients suffering from exuding wounds deserve better than long-term discomfort and psychosocial impacts<sup>4</sup>.

“When people see all that stain it looks terrible ... a big wet, smelly stain coming through your bandages.”

Direct quote from patient interviews conducted by Mölnlycke<sup>2</sup>

**64%** of patients experience problems with leakage<sup>5</sup>.



Good news:  
It doesn't have to  
be this way, with  
Mepilex<sup>®</sup> Up

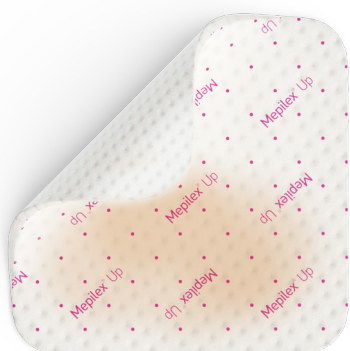
# Say hello to innovative fluid management

Mepilex® Up is a new kind of non-bordered foam, designed to minimise leakage and prevent its spread to healthy skin<sup>1</sup>.

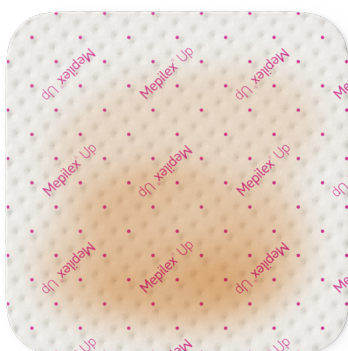
## Low profile with a big impact

- Despite its slimness, Mepilex Up can handle high volumes of fluids<sup>1</sup>
- With its low profile, it is designed to conform well to difficult-to-dress areas<sup>1</sup>

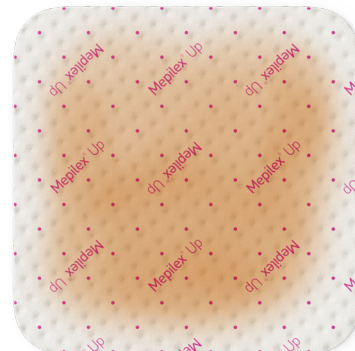
## Unique spreading properties



A patented foam structure creates a dimpled surface.



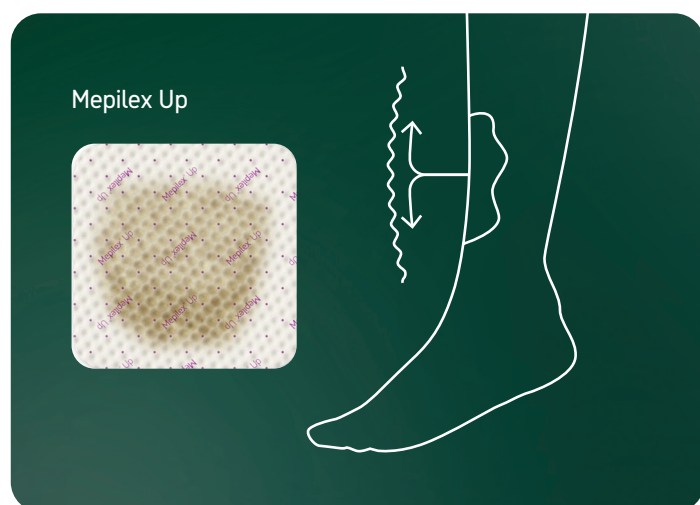
The innovative dimpled foam improves the capillary action, allowing fluids to spread in all directions, even against gravity<sup>5</sup>.



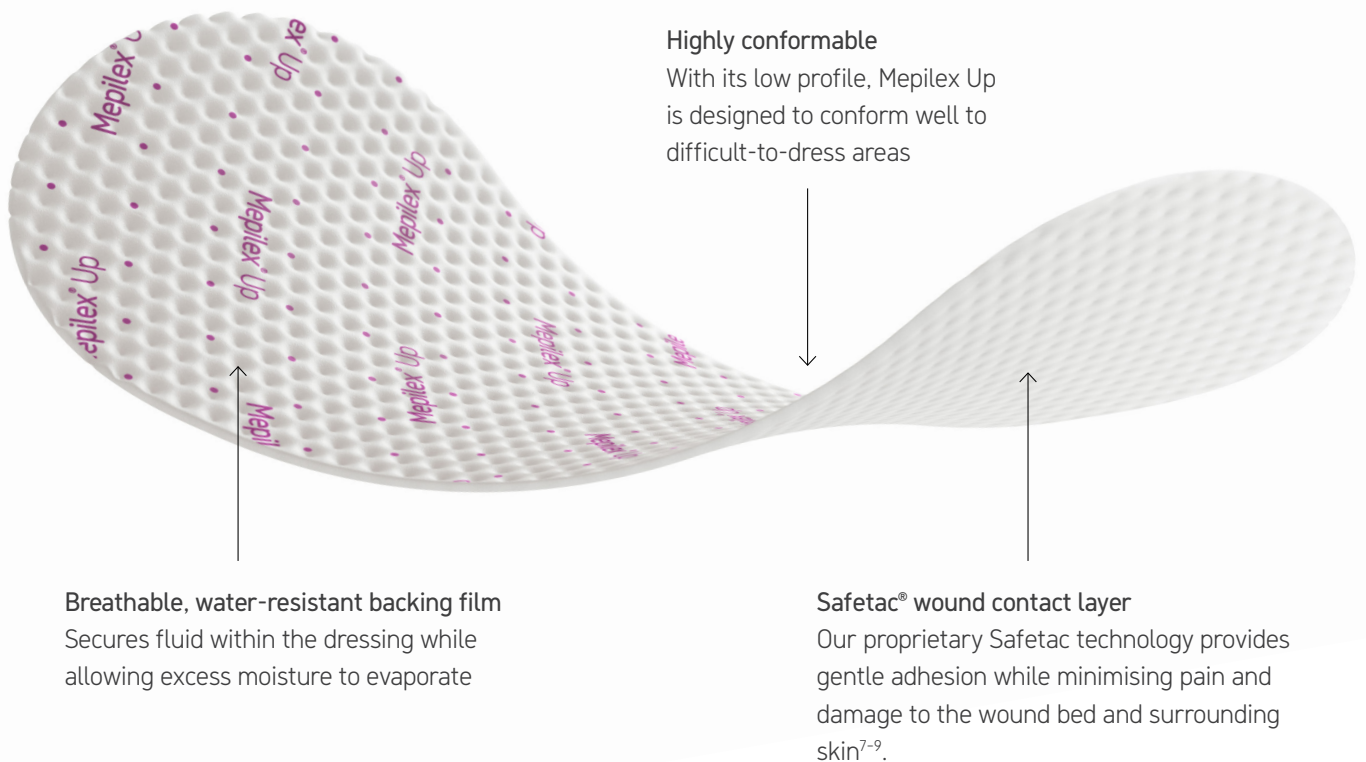
The unique spreading properties minimise the risk of leakage and manage exudate for several days, which may contribute to longer wear time<sup>5</sup>.

# Enhanced capillary action

All foam dressings are specifically designed to absorb wound fluid using capillary action, which occurs through narrow spaces. However, Mepilex Up's unique dimpled structure boosts this process. This means it can spread fluids more effectively in every direction, even upwards, against gravity<sup>1</sup>.



# Gentle, secure and conformable



## Highly conformable

With its low profile, Mepilex Up is designed to conform well to difficult-to-dress areas

## Breathable, water-resistant backing film

Secures fluid within the dressing while allowing excess moisture to evaporate

## Safetac® wound contact layer

Our proprietary Safetac technology provides gentle adhesion while minimising pain and damage to the wound bed and surrounding skin<sup>7-9</sup>.

## Study result

In a clinical study investigating the use of Mepilex Up as part of a treatment regimen, 68 patients with moderately to largely exuding wounds (34 venous leg ulcers and 34 diabetic foot ulcers)\* of mean and median wound duration 75 weeks (17 months) and 28 weeks (6 months), respectively, were followed up for 6 weeks.

### The results speak for themselves<sup>1</sup>:

**71.4%**

of wounds assessed as 'improved' or 'healed' from baseline to follow-up visit

**63%**

median wound area reduction at final visit

**5**

days median wear time

\*Wound characteristics at baseline were 38% were recurring wounds; wounds with moderate and large exudate amounts 85% and 15%, respectively; wounds with low and high viscosity of exudate 90% and 10%, respectively.

Mepilex Up has better fluid handling capacity than other foam dressings<sup>1\*</sup>. This means it can contribute to:



Longer wear time and fewer dressing changes<sup>1</sup>



Minimised risk of leakage<sup>1</sup>, even under compression



Potentially improved quality of life for patients<sup>6</sup>



Lower cost of care due to fewer dressing changes<sup>1</sup>

## Fits right into your formulary

Mepilex Up can be used on a wide range of exuding wounds, in all healing stages. It is highly adaptable and seamlessly integrated into existing protocols, without needing to change the choice of compression wraps or offloading devices.

\*When comparing lab test result for Smith & Nephew Allevyn Gentle, Coloplast Biatain® Silicone NB, Convatec Aquacel® Foam, Essity Cutamed® Siltec®, according to EN13726:2023 annex E





# A life with less leakage is within reach with Mepilex® Up

Product number	Dressing size cm	Pcs/box	Pcs/trp
212015	5 x 5cm	5	40
212100	10 x 10cm	5	70
212300	15 x 15cm	5	25
212200	10 x 20cm	5	25
212400	20 x 20cm	5	25
212500	20 x 50cm	2	12



Try it with your patients today. Contact your Mölnlycke sales representative to get started.  
[molnlycke.com](https://www.molnlycke.com)



#### References:

- Mölnlycke Health Care. Data on file. 2024.
- Jones E et al., Impact of exudate and odour from chronic venous leg ulceration, Nursing Standard 2008;22:45 (53-61). Date of acceptance January 4, 2008.
- Weir, D. and Davies, P. (2023). The impact of venous leg ulcers on a patient's quality of life: considerations for dressing selection. Wounds International, 7(2): 36-41.
- World Union of Wound Healing Societies (WUWHS) Consensus Document. Wound exudate: effective assessment and management. Wounds International, 2019.
- Price PE, Fagervik-Morton H, Mudge EJ, Beele H, Ruiz JC, Nyström TH, Lindholm C, Maume S, Melby-Østergaard B, Peter Y, Romanelli M, Seppänen S, Serena TE, Sibbald G, Soriano JV, White W, Wollina U, Woo KY, Wyndham-White C, Harding KG. Dressing-related pain in patients with chronic wounds: an international patient perspective. Int Wound J. 2008 Jun;5(2):159-71. doi: 10.1111/j.1742-481X.2008.00471.x. PMID: 18494622; PMCID: PMC7951668.
- Gardener S. 'Leaky legs' is not a diagnosis! impact of exudate on patients with venous leg ulceration. Journal of Community Nursing. 2024; 38(2):24.
- Zilmer R, et al., Biophysical effects of repetitive removal of adhesive dressings on peri-ulcer skin. J Wound Care 2006;15(5):187-191.
- Waring M, et al., An evaluation of the skin stripping of wound dressing adhesives. J Wound Care 2011; 20(9): 412-422.
- White, R. A multinational survey of the assessment of pain when removing dressings. Wounds UK. 4(1). 2008.

Allewyn and Allewyn Life are registered trademarks of Smith & Nephew, Inc. Coloplast is a registered trademark of the Coloplast Group. Convatec is a registered trademark of Convatec Inc. Essity is a registered trademark of Essity.

Find out more at [www.molnlycke.com](https://www.molnlycke.com)

Mölnlycke Health Care AB, P.O. Box 6, Entreprenörstråket 21, SE-431 21 Mölndal Sweden. Phone + 46 31 722 30 00. Mölnlycke, Mepilex and Safetac trademarks, names and respective logos are registered globally to one or more of Mölnlycke Health Care Group of companies. © 2025 Mölnlycke Health Care. All rights reserved. HQIM007297

