

Patient guide Using Avance® Solo

A few things to keep in mind when you are receiving therapy with Avance® Solo Negative Pressure Wound Therapy (NPWT) system.



Avance® Solo


Mölnlycke®



THE ENGLISH GARDEN

Prestige PLANTS for spring/summer

Small Gardens

HOW TO MAKE THE MOST OF EVERY INCH

Contents

Introduction to Negative Pressure Wound Therapy (NPWT)

Get acquainted with NPWT and Avance Solo

04-05

Things to keep in mind while using Avance Solo

Learn about what to do and what to avoid when receiving therapy with Avance Solo NPWT system

06-07

How to care for your Avance Solo

Information on how to clean and care for your medical device and what the audiovisual signals mean

08-11

Scan the QR code with your phone camera to visit the Avance Solo site. **Here, you will find instructional videos, downloadable documents and more.**



Note: You should immediately contact your healthcare professional if you experience any problems. This includes bleeding, elevated blood pressure or issues with the device. For any questions, reach out to your caregiver:

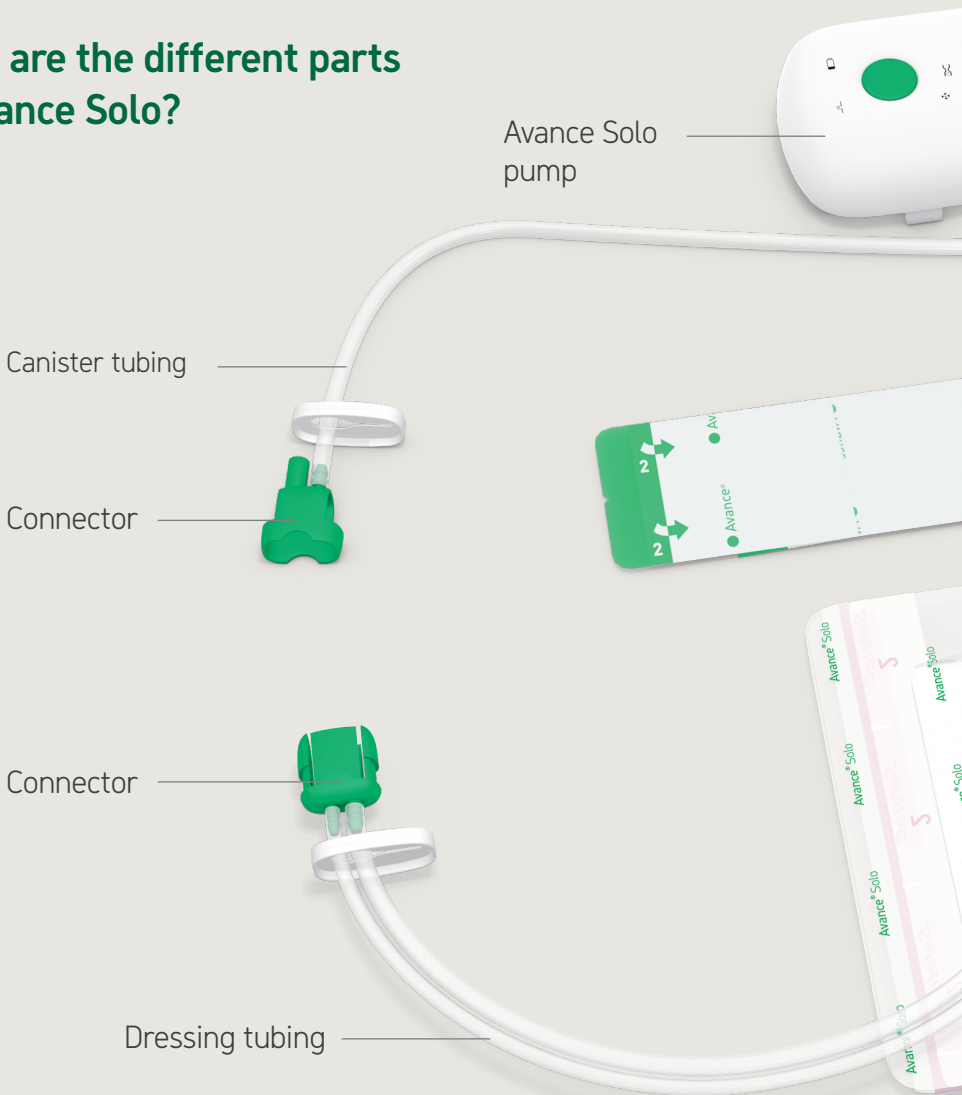
Name: _____

Phone: _____

Email: _____

You are receiving therapy with Avance Solo NPWT from Mölnlycke. This brochure will inform you on how to use and care for the device. Please read it carefully.

What are the different parts of Avance Solo?

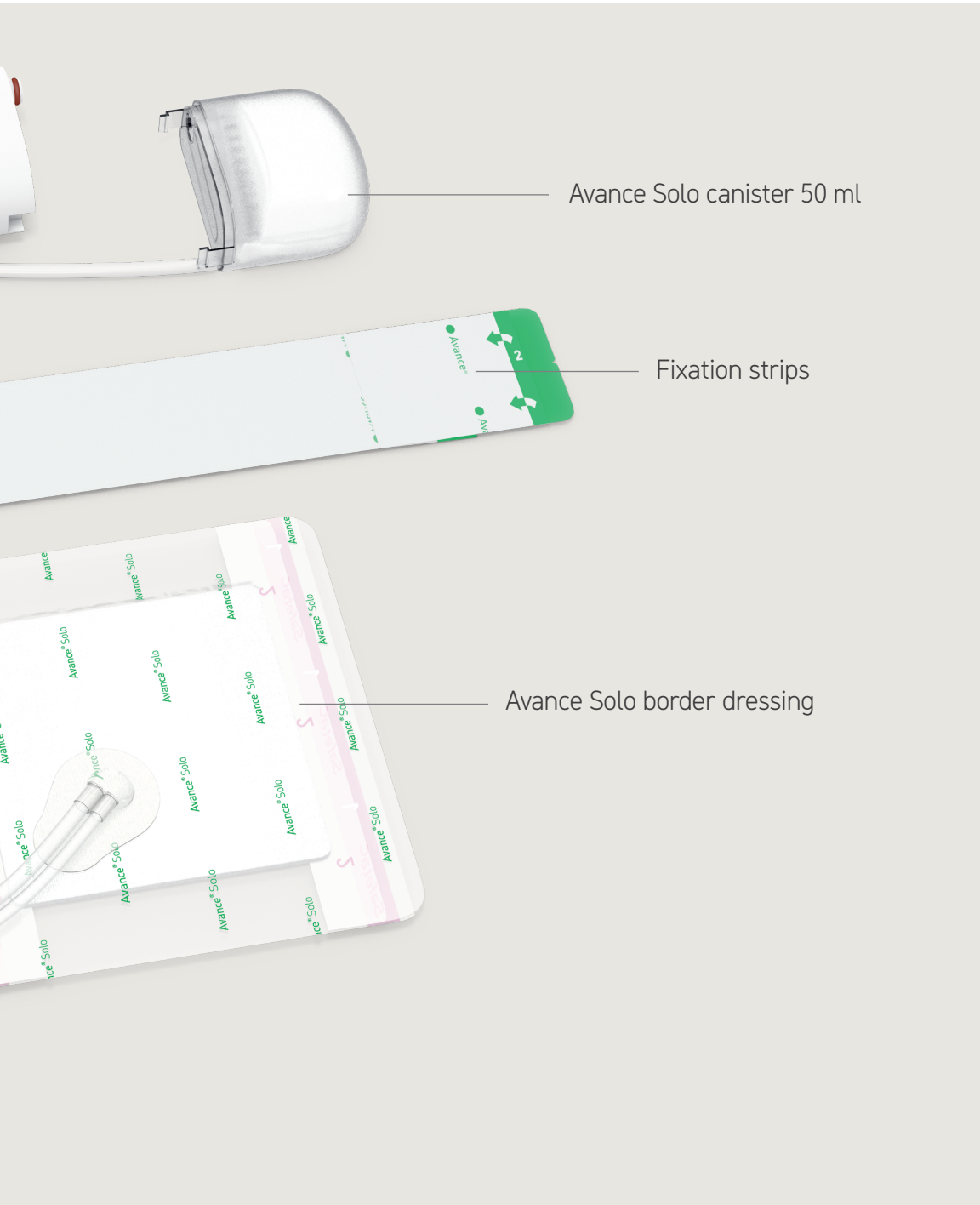


What is Negative Pressure Wound Therapy (NPWT)?

Negative Pressure Wound Therapy (NPWT) is a method of wound management using suction, clearing the wound of exudate and fluids.

What are the benefits of NPWT?

- It helps support healing in complex and slow to heal wounds.¹
- It helps reduce swelling and protects the wound from external contamination.²



Things to keep in mind while using Avance Solo

Avance Solo is a medical device and it is important that you care for it properly. For complete instructions, warnings and precautions see the patient user manual, included in the product package.

Do not:

- Change dressings yourself.
- Expose the dressing, device, canister or tubing to jets of water, cold or heat (operational temperature 5–40° C).
- Submerge the dressing, pump, canister or tubing into water.
- Use on an aircraft. Remove batteries during air travel.
- Disassemble or tamper with the device.
- Let children or pets have access to the device.

Important features:

- Make sure you are aware of the visual and audible alarms for leakage, blockage and low battery given by the Avance Solo pump. See page 11 for a list of signals and alarms.
- In order to deliver continuous regulated negative pressure, the pump cycles and a pulsing sound occurs. This is completely normal and a confirmation that the system is operating.²⁻⁷ To reduce disturbance while sleeping at night, a carry case can be offered via your healthcare provider.
- Check that the dressing is contracted and firm to the touch. If not, consult a healthcare professional. Remember to immediately contact your caregiver if you experience any issues.

Make sure to wear and place the device in a way that avoids:

- Entrapment or strangulation (i.e., tubing swirled around a body part).
- Tie up or blocking of tubing.
- When using the belt clip ensure that it is positioned to either side of your waist. If for comfort or convenience, you position to the front, remove prior to sitting down to avoid the pump being pushed out of the belt clip.

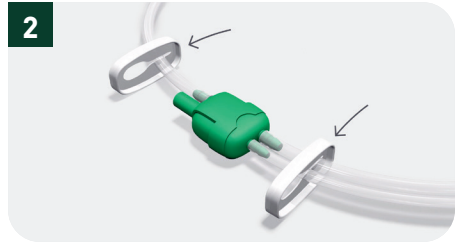
How to handle my daily hygiene routines?

Light showering is allowed but it is important to keep the pump away from water. The dressing is water resistant but should not be exposed to direct jets of water. Follow the guide below to avoid contamination.

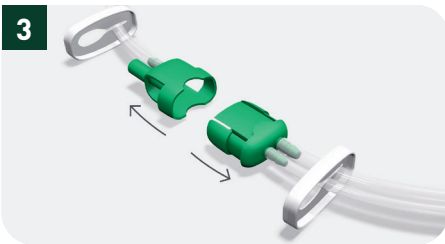
Follow these steps when taking a light shower:



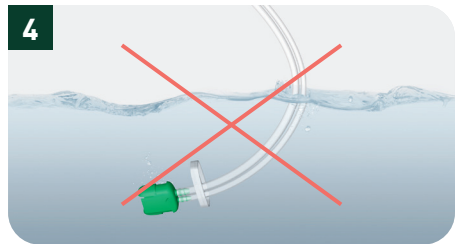
1 Pause therapy by pressing and holding the green start button on the pump and release after two (2) seconds.



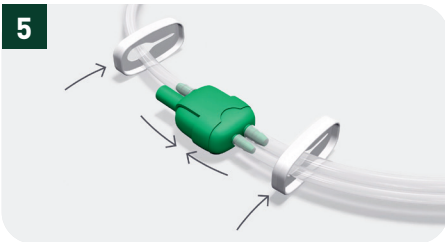
2 Clamp the canister tubing and dressing tubing by positioning the slide clamps next to the green connectors and slide across the tubing until secured.



3 Disconnect the canister tubing with pump from the dressing tubing and place the part with the pump safely away from the shower.



4 Ensure that the dressing tubing is not submerged into water when taking a shower.



5 After shower, reconnect the dressing to the pump and canister by fitting the green connectors. Once connected, release the two clamps.



6 Restart therapy by pressing and holding. Release after two (2) seconds, until the pump activates and the button flashes.

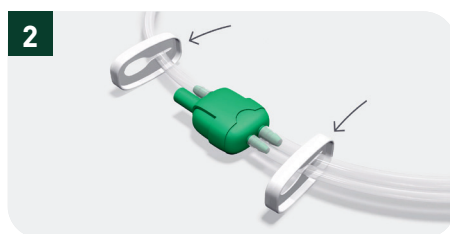
How to care for your Avance Solo

Changing the canister

You can see if the canister should be changed through the transparent window on the back of the canister, if there's a pump blocking alarm. If you are to change canister, follow the steps below. Always try out changing canister together with a healthcare professional when receiving Avance Solo.



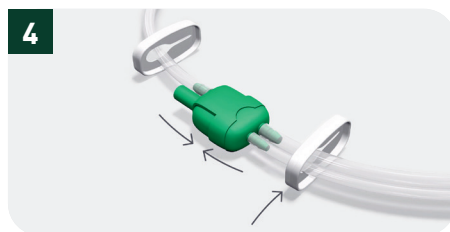
Pause the pump by pressing and holding the green start button and release after two (2) seconds. The pump will emit two beeps to confirm it is in pause mode.



Slide the tubing clamps up close to the green connectors and push both clamps across the tubing to ensure there is no fluid leakage when disconnecting. Disconnect the connectors.



Release tubing at the back of the pump. Press hard on the side-mounted plastic tabs and pull while gently rocking to disconnect the canister. Connect the new canister. You should expect the canister to be a firm fit, this is normal and necessary for maintaining an effective seal.



Recouple the two green connectors, release the clamp on the dressing tubing and restart the pump by pressing and holding down the green start button, release after two (2) seconds. Monitor that the negative pressure is active, the dressing should be contracted and firm to the touch.

Changing the batteries

You must change the two (2) batteries if there is a Low battery alarm, or after 7 days. Only use AA-FR6 1.5V Energizer lithium batteries.

To replace the batteries, perform the following steps:

- If the pump is still active, pause the pump by pressing and holding the green start button, and release after two (2) seconds.
- Open the battery compartment by sliding the lid.
- Remove the batteries.
- Insert new batteries, ensuring that the positive terminal (marked +) and negative terminal (marked-) of each battery matches the +/- label in the battery compartment.
- Close the battery compartment lid.
- The pump will conduct a self test and a chime will sound when the test is completed and the pump is ready for use.
- Restart the pump by pressing and holding down the green start button, release after two (2) seconds. Make sure that the negative pressure is active, the dressing should be contracted and firm to the touch.



Cleaning the device

Occasional cleaning of the pump can be performed by wiping with a damp cloth or with a non-abrasive detergent. Do not put the pump under running water.



Don't forget to visit the Avance Solo patient site!

Here, you will among other things find instructional videos on the topics in this brochure.







What do the signals from Avance Solo mean?

The device uses various signals to alert you if operation is working or if you need to take action. Please, make sure that you are able to hear and understand the various signals.

To pause therapy, press and hold the green start button, release after two (2) seconds. When paused, the pump will automatically start after 60 min. To restart therapy, press and hold the green start button, release after two (2) seconds until the pump activates and the start button flash.

Alarms and trouble shooting

Audible and visual display description	Possible cause
 <p>The leakage indicator light flashes once every second.</p> <p>The pump repeatedly alarms with a beep and will then pause.</p>	<p>An air leakage has been detected.</p>
 <p>The blockage indicator light flashes once every second.</p> <p>The pump repeatedly alarms with a beep and will then pause.</p>	<p>The canister is full or there is a blockage in the tubings.</p>
 <p>The low battery indicator light flashes once every five (5) seconds.</p> <p>When less than 4 hours of battery power remains, the low battery indicator light flashes once every second and the pump repeatedly alarms with a beep.</p>	<p>The batteries are low.</p>
 <p>All indicator lights flash at the same time, once every second, and the pump repeatedly alarms with a beep.</p>	<p>Alarm for end of device lifespan (14-days) or internal failure and the pump cannot be restarted.</p>

Note: The regular pulsing sound that you might hear from the pump is completely normal and a confirmation that the system is operating.

How to troubleshoot

To correct a leak:

Press around the dressing border and the strips to improve contact with the skin. Check that the canister is attached to the pump, that the canister tubing is attached to the canister and that the dressing tubing is connected to the canister tubing.

Press the green start button to restart the pump.

If the leakage is not resolved, the pump will again alarm for leakage and then pause therapy.

If this happens, contact your healthcare professional.

To correct a blockage:

Ensure that the tubing is not clamped nor kinked. If the canister is full, change the canister according to instructions on page 8 in this document, or in the user manual (included in the product package) under section 7.3.

Press the green start button to restart the pump.

If blockage is not resolved, the pump will again alarm for blockage and then pause therapy.

If this happens, contact your healthcare professional.

To change batteries:

Change the batteries according to instructions on page 9 in this document, or in the user manual (included in the product package) under section 7.4. Only use the type and model of lithium batteries specified for this product by Mölnlycke Health Care. Press the green start button to restart the pump.

Contact your healthcare professional or Mölnlycke Health Care at 1-800-843-8497.

Proving it every day

At Mölnlycke, we deliver innovative solutions for managing wounds, improving surgical safety and efficiency and preventing pressure ulcers. Solutions that help achieve better outcomes and are back by clinical and health-economics evidence.

In everything we do, we are guided by a single purpose: to help healthcare professionals perform at their best. And we're committed to proving it every day.

References:

1. Apelqvist, J., Willy, C., Fagerdahl, A.M. et al. Negative Pressure Wound Therapy - overview, challenges and perspectives. J Wound Care 2017; 26: 3, Suppl 3, S1-S113. 2. Willy C, Agarwal A, Andersen CA, Santis GD, Gabriel A, Grauhan O, Guerra OM, Lipsky BA, Malas MB, Mathiesen LL, Singh DP, Reddy VS. Closed incision negative pressure therapy: international multidisciplinary consensus recommendations. Int Wound J 2016; doi: 10.1111/iwj.12612. 2-7. Data on file (ref10) (ref15) (ref17) (ref18) (ref23) (ref24).

Find out more at www.molnlycke.us

The Mölnlycke, Avance trademarks, names and logotypes are registered globally to one or more of the Mölnlycke Health Care Group of Companies. ©2026 Mölnlycke Health Care AB. All rights reserved.

MHC-2026-000724

